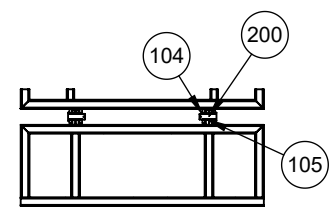
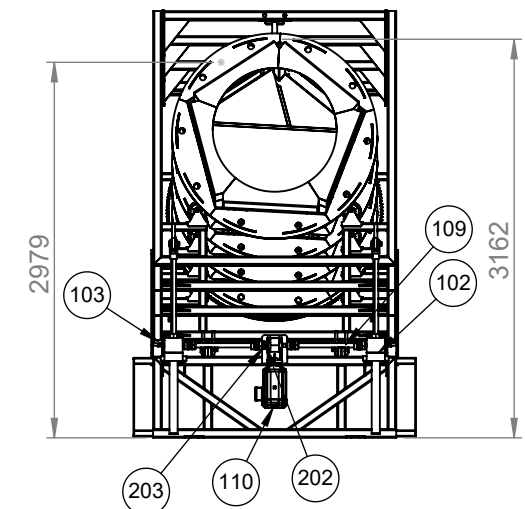
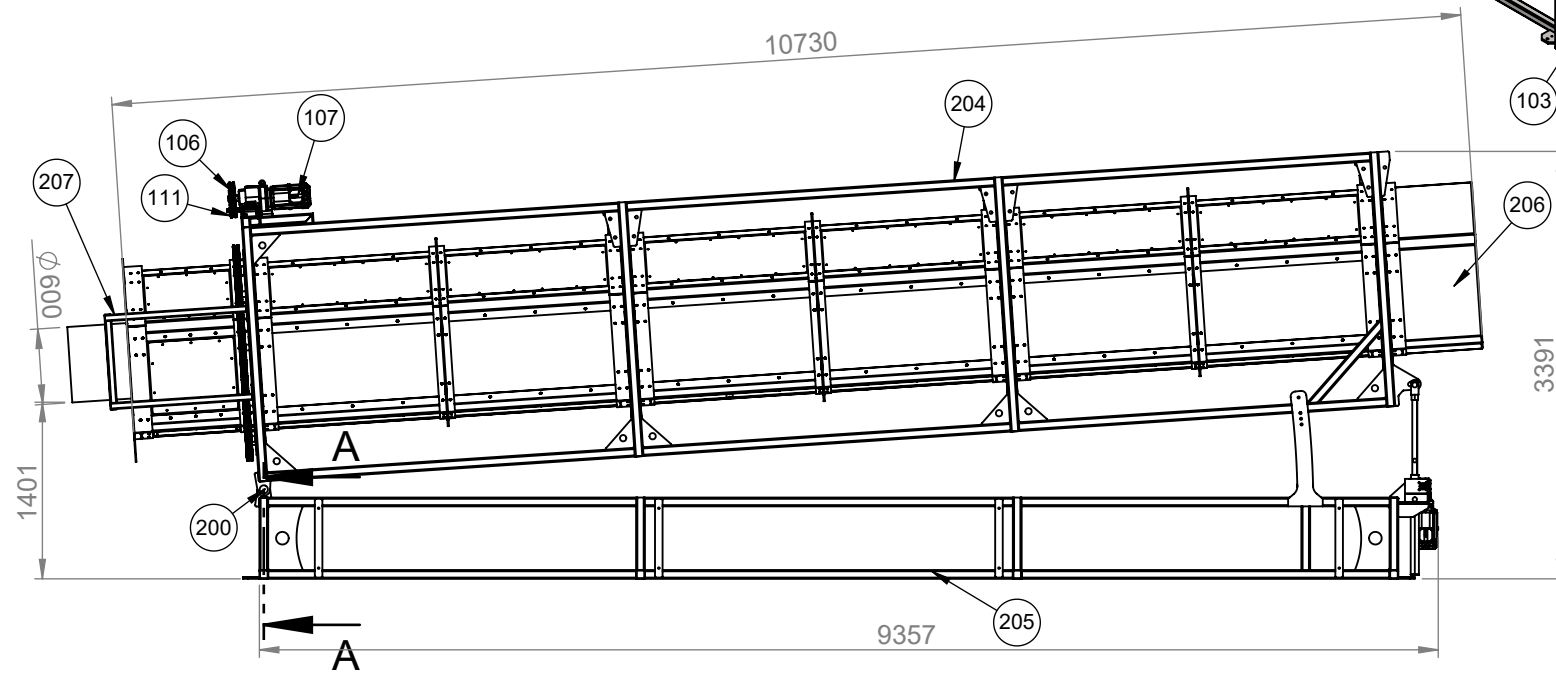
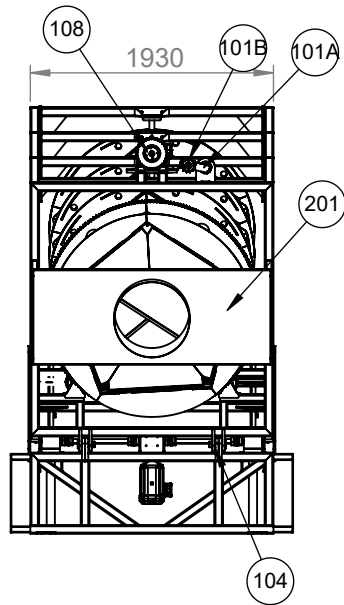
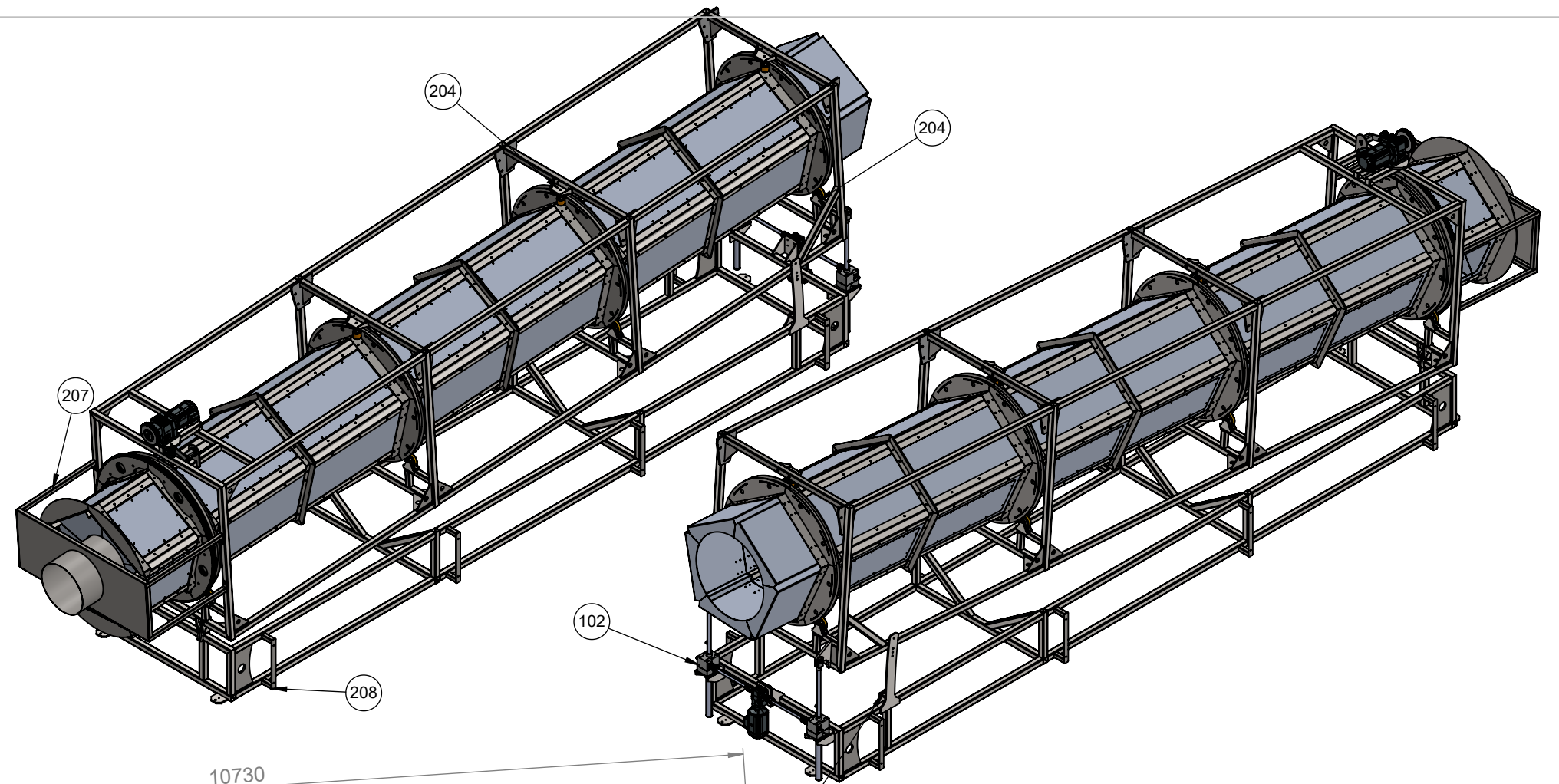


ITEM NO.	PART NUMBER	DESCRIPTION	QTY.
101A	06011005	Tensioner	1
101B	06520006	Wheel Set	1
102	560-407-156913-060	Lifting Jack	2
103	6025MF25	Male Flat Buffer 60 Dia M10	2
104	GFM_4550_25_1 (1).stp	Bearing Sleeve	4
105	PSM_4550_50.stp	Bearing Sleeve	2
106	phs 80-2TB30	30T Duplex 1" Sprocket	1
107	R77_DRN100L4_TF	Main Drum Drive Motor	1
108	bushing_3020	Taper Lock Bush to suit 40mm Shaft	1
109	290-006-065-0618	Shaft with Connecting bushes 618mm Long	2
110	KA29B_DRN100LM2	Lift Drive Motor	1
111	16B-2 1" Chain 6M long	Duplex 1" Chain c/w Joining Links	6m
200	GF-Trom11-6-009	Hinge Pin	2
201	GF-Trom11-6-104	Blower End Panel	1
202	GF-Trom11-6-066	Motor Shaft (lift)	1
203	GF-Trom11-6-067	Motor Flanged Shaft	1
204	GF-Trom11-6-Sub-001	Upper Section Assembly	1
205	GF-Trom11-6-Sub-003	Lower Frame Weldment	1
206	GF-Trom11-6-Sub-015	Drum Assembly	1
207	GF-Trom11-6-Sub-019	Off Feed End Mounting Frame	1
208	GF-Trom11-6-111	Outer Frame Connecting Mount	8



SECTION A-A

Remove all sharp edges and burrs

UNLESS OTHERWISE SPECIFIED: DIMENSIONS ARE IN MILLIMETERS SURFACE FINISH: TOLERANCES: LINEAR: ±0.5mm ANGULAR: ±0.1mm		REVISION:
DO NOT SCALE DRAWING		TITLE: <b>Trommel 1200Dia x 11M Long</b>
DRAWN	NAME DATE	
CHK'D		
MATERIAL:	DWG NO:	<b>MS Designs Innovations</b>
SCALE: 1:60	WEIGHT: 3966.07	A3
		SHEET 1 OF 1